

# STATE OF CHILD CARE DURING COVID-19



FOR YOUTH DEVELOPMENT®  
FOR HEALTHY LIVING  
FOR SOCIAL RESPONSIBILITY

YMCA OF SAN DIEGO COUNTY CHILDCARE RESOURCE SERVICE

## CHILD CARE LANDSCAPE

The San Diego Emergency Child Care Task Force worked to support families and child care providers the first 100 days of the COVID-19 pandemic. This coalition surveyed child care providers to assess the status of available child care, understand the challenges providers face in continuing to provide care, and consider solutions to build the pandemic resilience of our child care sector and, ultimately, our economy.

Licensed child care generally falls into two categories: child care centers (CCCs) and family child care homes (FCCs). Child care centers activities take place in classroom settings for children of similar ages. Family child care takes place in a provider's home and children are cared for in a family-like setting, in mixed age groups, and with day-to-day activities mirroring those in child care centers.

COVID-19 has made lack of access to child care critical, but it has not created it. This crisis, and the data that follow, represent an opportunity to build back better and create a child care infrastructure where providers and children alike can thrive.

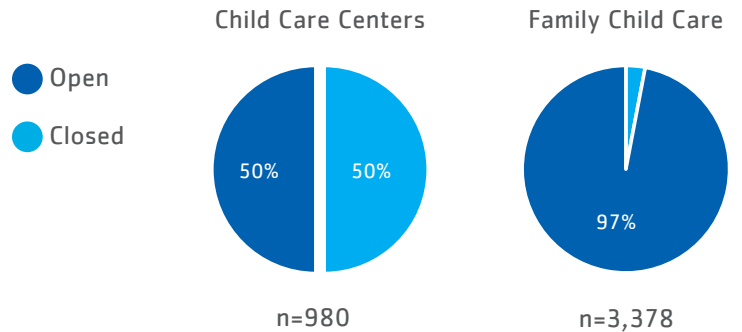
"I am tired, emotionally and physically... Please see that early child development education is a valuable part of society"  
- Child Care Center Provider

"We feel like we are the 'invisible' essential worker"  
- Family Child Care Provider

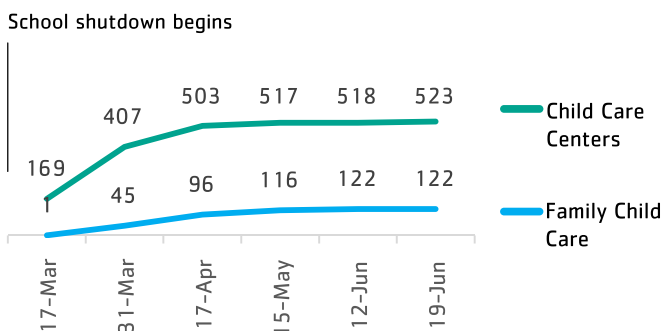
"Hear our voices [and] stories. We are on the **frontline** as well"  
- Family Child Care Provider

## CLOSURES DUE TO COVID-19

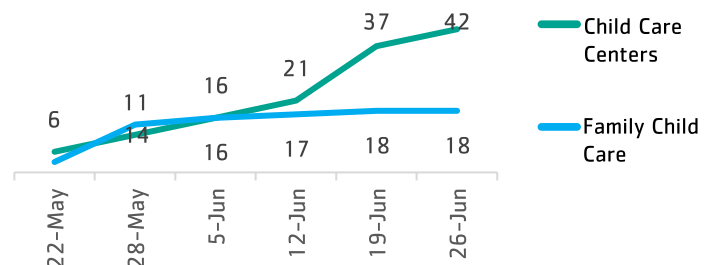
Since March 14th, some child care providers across San Diego County closed due to COVID-19. Closures peaked on June 19th, with 54% of Child Care Centers and 4% of Family Child Care closed. Providers have also started to reopen during this time.



### Timeline of closures among child care providers since San Diego County school shutdowns



### Timeline of reopening among child care providers since San Diego County school shutdowns



# STATE OF AFFAIRS

The following data represent the results of the 398 providers who responded to the survey.

## CHILD CARE CENTERS: 88 RESPONSES



**63%** of CCCs are currently open



**93%** of closed CCCs have plans to reopen



**76%** of CCCs are in North County and the City of San Diego



On average, CCCs are caring for **37** children daily



**59%** of CCCs are licensed to care for 21-100 children and **41%** are licensed for 101+ children



On average, CCCs have room to care for **37** more children daily

## FAMILY CHILD CARE: 310 RESPONSES



**94%** of FCCs are currently open



**73%** of closed FCCs have plans to reopen



**70%** of FCCs are in South County and the City of San Diego



On average, FCCs are caring for **6** children daily



**53%** FCCs are licensed to care for 1-8 children and **47%** are licensed for 1-14 children



On average, FCCs have room to care for **5** more children daily

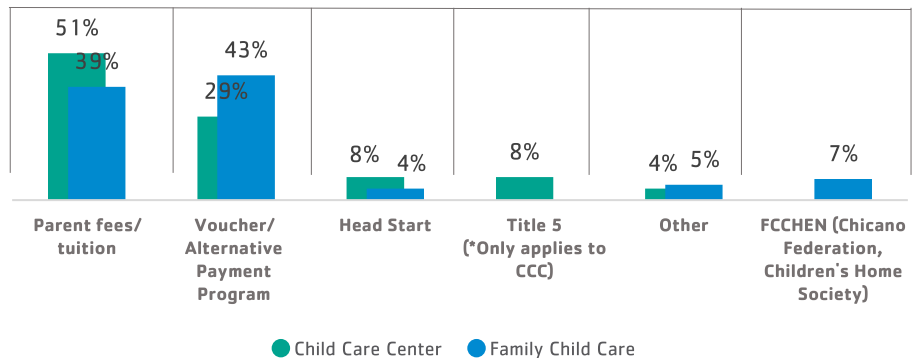
CURRENTLY, **58%** OF CCCs ARE NOT FULLY ENROLLED

CURRENTLY, **48%** OF FCCs ARE NOT FULLY ENROLLED

## FUNDING SOURCES

CCCs receive the most revenue from parent fees, while FCCs receive the most revenue from subsidized child care vouchers.

SOURCES OF ALL REVENUE



## TOP CHALLENGES IN PROVIDING CARE

### CHILD CARE CENTERS:

#### Top 3 Challenges in Providing Care

1. Regulations regarding group size and group configurations\*
2. Reduced enrollment/income
3. Staying up to date on the latest guidance and rules

### FAMILY CHILD CARE:

#### Top 3 Challenges in Providing Care

1. Reduced enrollment/income
2. Staying up to date on the latest guidance and rules
3. Anxiety about contracting the virus by staff and/or families

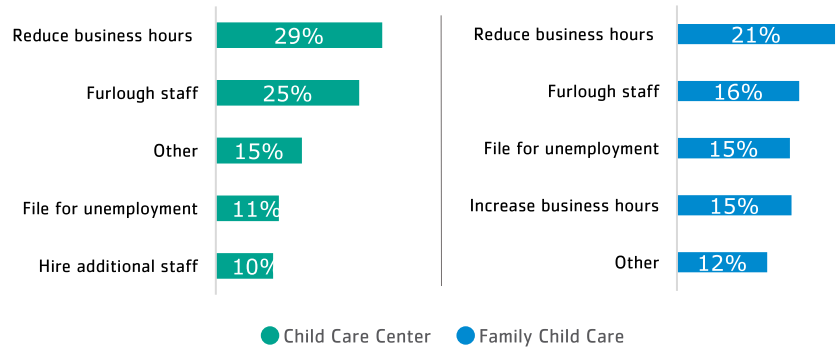
\*Group size regulations have since been loosened

# CURRENT CONDITIONS

## OPEN PROVIDERS

85% of surveyed providers expect to remain open in the next 2 months. However, providers had to drastically modify operations beyond public health requirements to remain open.

### TOP MODIFICATIONS TO REMAIN OPEN

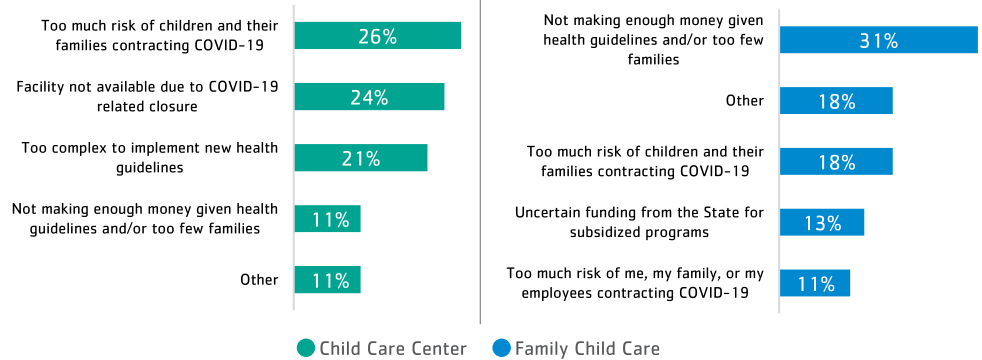


“I feel daycare providers may sacrifice their health, their family’s health for financial income. In simple words we are afraid to turn children away who maybe sick due to having to pay our bills.” – Family Child Care Provider

## CLOSED PROVIDERS

70% of FCCs spent their personal savings, filed for unemployment, or both after closing due to COVID-19. Providers reported several reasons for closing their operations.

### MAIN REASON FOR CLOSING OR CONSIDERING CLOSING

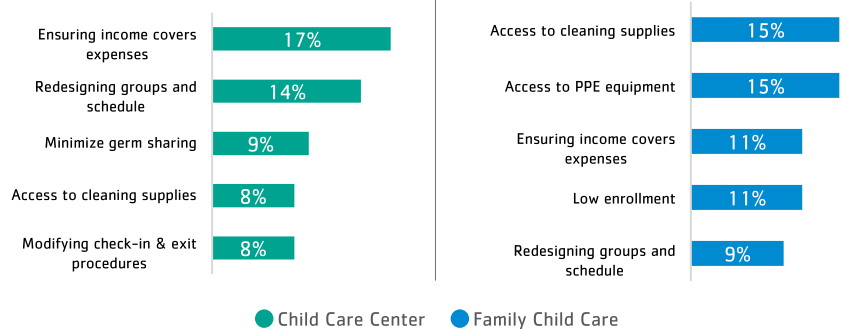


“Regulations with group size restrictions, stability of teachers, and stability of groups made it virtually impossible for us to remain open without financial help. I felt like we were put in an impossible situation.” – Child Care Center Provider

## RESUMING OPERATIONS

87% of all closed providers surveyed plan to re-open by August 2020. However, providers face several challenges to resuming operations.

### TOP CHALLENGES TO RESUMING OPERATIONS



“...Children need us to be there when their parents are working so we need the supplies to help us stay open.” – Family Child Care Provider

# RESOURCES & SUPPORT FOR PROVIDERS



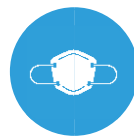
County of San Diego  
Early Care and  
Education Sector  
Meetings



Networking with  
Other Providers



Resource Hub for  
Cleaning Supplies and  
Other Resources



COVID-19 Guidelines  
from the CDC and  
County of San Diego



Resources from  
Community  
Organizations  
(CDA, CCL, CDE, Union  
of Childcare Workers,  
YMCA)



YMCA weekly email  
updates, one-on-one  
calls, and staff  
support

## A MESSAGE TO POLICY MAKERS: WHAT WE NEED TO PROVIDE QUALITY CARE AND SUPPORT ECONOMIC RECOVERY

### ALLOW FLEXIBILITY WITH REGULATIONS:



- Technical assistance to implement health regulations
- Flexibility in group sizes and classroom arrangements
- Ability to modify facility guidelines while maintaining social distancing

"The 10 to 2 ratio is not financially feasible and facilities will not be able to continue to remain open...Safety is our number one priority but allow us to determine how our facility can handle that with social distancing." - Family Child Care Provider

\*Group size regulations have since been loosened

### PROVIDE EQUAL COMPENSATION & BENEFITS:



- Health insurance, sick days, retirement funds
- Higher provider rates and teacher pay
- Wage guarantees in emergencies

"We don't have insurance in case we, the providers, get sick. How can we provide for our family and the community. Without childcare no parent would be able to work." - Family Child Care Provider

### PROTECTION FROM REDUCED INCOME:



- Access to additional grants and unemployment benefits
- Funding for providers without subsidized or enrolled families to maintain revenue
- Subsidies for families to be able to afford child care

"...all of my teaching [materials] come out of my wages and living expenses...Being able to deliver a superb curriculum comes when one has the right tools to carry that out." - Family Child Care Provider

### RECOGNIZE PROVIDERS AS ESSENTIAL WORKERS:



- Hazard pay and access to health care
- Value providers for their role in Early Care and Education (ECE)
- Long-term investment & systemic change in Early Care and Education

"ECE needs more government support across the board to elevate the profession to the same level as K-12. ECE is not valued as education but as babysitting. Improve pay and work conditions and watch ECE soar." - Child Care Center Provider

**Kim McDougal, Executive Director:**  
kmcDougal@ymca.org

**YMCA Childcare Resource Service**  
3333 Camino del Rio S. #400  
San Diego, CA 92108  
619-521-3055

**Learn more at:**  
**Child Care Supply Map**  
<http://bit.ly/childcaresupplymap>



[www.ymcasd.org/crs](http://www.ymcasd.org/crs)



[Facebook.com/YMCA.CRS](https://www.facebook.com/YMCA.CRS)



[Instagram.com/YMCACSS](https://www.instagram.com/YMCACSS)

### OUR MISSION:

The YMCA of San Diego County is dedicated to improving the quality of human life and to helping all people realize their fullest potential as children of God through the development of the spirit, mind and body.